

Isohelix

DNA Swabs and Sample Handling



DNA Buccal Swabs DNA Stabilisation and Isolation Kits

Isoheli
DNA Sampling and Purification

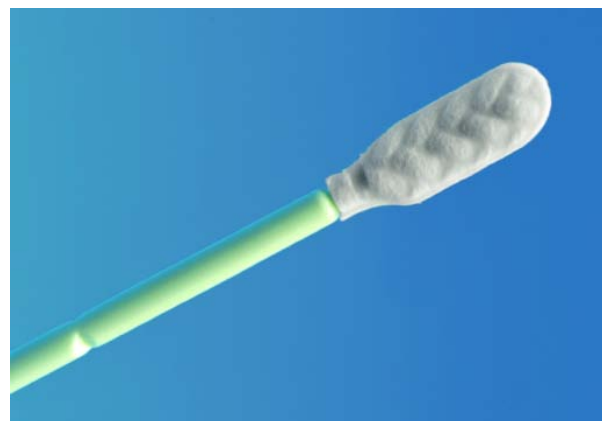
Isohelix an Integrated DNA strategy.

Each Isohelix product has been specifically designed and developed to improve all the DNA sampling steps from our original product; the DNA buccal swabs, right through to the DNA isolation. We have taken an integrated approach by looking at each individual step to improve yields, reduce sample losses and at the same time improve the handling procedures, the result maximises yields and quality of DNA.

Smarter Collection using Isohelix DNA Buccal Swabs

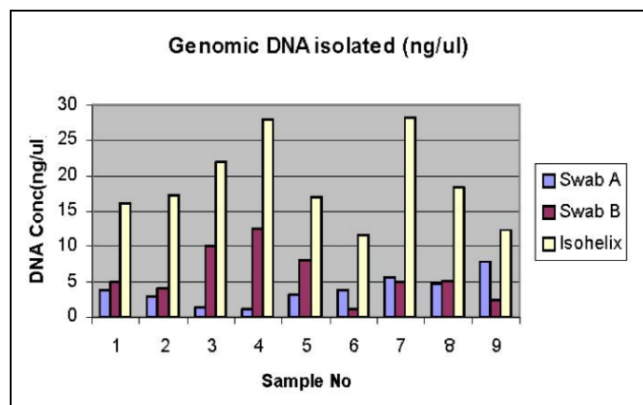
The Isohelix range of Buccal Swabs has been specifically designed to give increased yields of high quality buccal cell and genomic DNA. Buccal cell sampling offers a viable alternative to blood collection and, together with the Isohelix range of DNA Isolation and Stabilisation kits, enables high yields of pure, intact DNA to be collected easily and quickly. Isohelix swabs are suitable for both human and veterinary use and offer significant advantages over other swab designs in terms of efficiency of cell collection by the unique swab matrix, which combined with a quick release surface, maximises yields of DNA. Swab batches are ethylene oxide treated and routinely tested for human DNA contamination.

- ✓ **High yielding swabs for buccal cell DNA collection**
- ✓ **Unique swab matrix greatly improves DNA yields**
- ✓ **Alternative to blood collection**
- ✓ **Suitable for human and veterinary use**
- ✓ **Easy to handle and quick to use**



Isohelix swabs are used in:

- ✓ **Research Genotyping Applications**
- ✓ **Veterinary Genotyping and Diagnostics**
- ✓ **Paternity and Heredity Services**
- ✓ **Forensics and DNA Population Studies**



DNA Buccal Swabs

SK-1S IsoheliX Swab Cat. No: SK-1S

The SK-1S swab uses the unique swab matrix design to efficiently collect buccal cell samples. Following sampling you simply snap the shaft just above the swab head and place into the tube provided, then seal for containment.

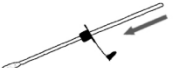


- ✓ *Swab matrix significantly improves DNA yields*
- ✓ *Various formats available with/without tubes*
- ✓ *Available in single and twin sterile packs*
- ✓ *Alternative to blood collection*








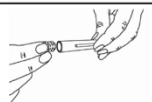
SK-2S IsoheliX Swab Cat. No: SK-2S

The SK-2S has the same features as the SK-1S except that it includes a unique cap design which allows you to simply push the entire swab head from off the shaft into the collection tube after sampling. This format has the advantage of being easier to manipulate at the DNA isolation stage whether using manual or HT extraction methods.

Instructions for IsoheliX SK-2S Buccal Swabs Stages 1 – 3 as for SK-1 swabs shown above

4		Slide the plastic cap over the swab handle with the flat side of the cap facing upwards and the swab facing downwards.
5		Insert the swab into the clear plastic tube and push the cap into place. Next, hold the cap while pulling the swab handle outwards to release the swab material into the tube.
6		Close the cap. The tube is now completely sealed.

Instructions for IsoheliX SK-1S, SK-3S, SK-4S and SK-5S Buccal Swabs

1		Pull open the package from one end.
2		Remove one of the swabs from the tube.
3		Insert the swab into your mouth and rub firmly against the inside of your cheek or underneath lower or upper lip. For standard DNA collection rub for 1 minute and in all cases rub for a minimum of 20 seconds. Important – use reasonable, firm and solid pressure
4		Place the swab back into the tube. Do not touch the brush with your fingers.
5		Place your thumbnail in the small groove set in the handle, then snap the handle in two by bending to one side. Let the swab head fall into the tube.
6		Seal the tube securely with one of the caps.

SK-2S swab design showing special release cap and removal of swab head from shaft



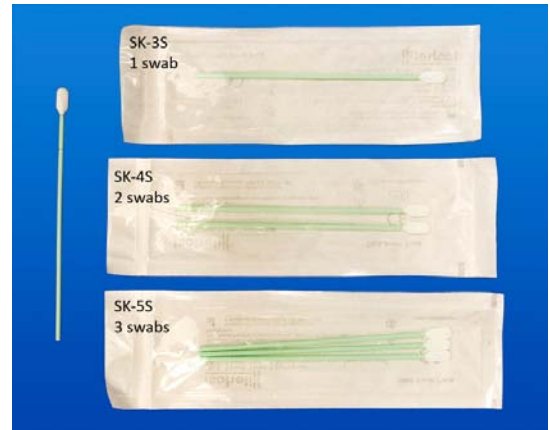
Other Isohelix Swab Formats

Other Isohelix Swab Formats

Cat. No: SK-3S	1 swab per wrapper
Cat. No: SK-4S	2 swabs per wrapper
Cat. No: SK-5S	3 swabs per wrapper

The SK-3S, SK-4S and SK-5S formats all use the same design and materials used in the SK-1S and SK-2S formats, and have exactly the same advantages for efficiently collecting buccal cell samples.

Like the SK-1S you can quickly snap the shaft at the breakpoint if you wish to store the swab in a tube. If this is your preferred method, Cell Projects has available pre capped tubes that can be ordered with these formats.



SK3, SK4 and SK5 swab formats

MS Mini DNA Isohelix Swabs

Cat. No: MS-01 / MS-02 / MS-03 / MS-04

The MS-01, MS-02, MS-03, MS-04 Mini DNA Isohelix Swabs use exactly the same matrix material as the SK swabs so there is significant history of use but have reduced dimensions and area. The width of the swab has been reduced from 8mm to 6mm and employs a slightly different shaft attachment enabling a DNA yield close to the SK swabs. The swabs are Ethylene Oxide sterilised and are available in different swabs numbers per wrapper, the break point has been reduced compared to the SK swab allowing it to be used in smaller tubes.

Benefits

- ✓ *Smaller surface area size*
- ✓ *Very high pro rata DNA yields*
- ✓ *Fits smaller tubes so can be 96 racked*
- ✓ *Lower break point to fit shorter tubes*
- ✓ *Uses identical swab material to SK series*



MS and SK swabs showing size difference

Applications

Small Mammals, other Animals and Invertebrates
Particularly of interest for Mice Genotyping
Automation friendly

Buccal Swab Accessories

Transport packs (Cat. No: TP-50) including outer printed bag with absorbent pads for shipping buccal swabs.

Bar-Coded Labels (Cat. No: BC/3A/50) pre-printed in triplicate, 25 x 10mm on cryogenic labels, easily attached to tubes for identification.

Proteinase K (Cat. No: PK/22, PK/11) lyophilized in 22mg and 11mg vial sizes.



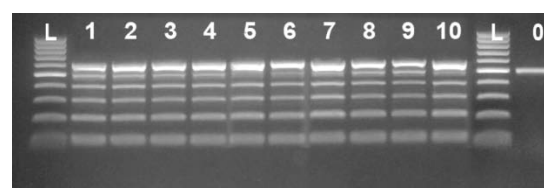
Buccal swab stabilisation

Isoheli Dri-Capsules cat. No: SGC-50

Designed for use with Isoheli SK-1S swabs, these silica gel capsules offer an easy to use alternative to chemical stabilisation for long term stability of the buccal DNA on the swab head prior to isolation.

- ✓ **Long term stability at room temperature**
- ✓ **Liquid free alternative to BuccalFix**
- ✓ **Easy to handle by patients and professionals**
- ✓ **Designed for use with SK-1 swab packs**
- ✓ **Ideal for remote sample collection**

Long term stability studies show that the stability of DNA samples on SK-1S swabs stored with Isoheli Dri-Capsules is maintained over a period of at least 3 years. The study is ongoing and is expected to confirm an increased period of stability well in excess of the 3 years tested so far.



Lanes 1 & 2: freshly taken swabs
Lanes 3 & 4: Stored 1 month with Dri-Capsule
Lanes 5 & 6: Stored 3 months with Dri-Capsule
Lanes 7 & 8: Stored 6 months with Dri-Capsule
Lanes 9 & 10: Stored 12 months with Dri-Capsule
0: Negative control

BuccalFix Stabilisation and Lysis Buffers Cat. No: BFX

The Isoheli BuccalFix range of stabilising buffers are designed to completely stabilise the DNA in samples from DNA buccal swabs by inhibiting all enzymatic and microbial activity that occurs following any buccal sampling. The DNA is fully stabilised and importantly, the structure and integrity of the DNA is fully maintained for further downstream processing applications. Once stabilised the DNA can be stored in the BuccalFix at Room Temperature for periods in excess of 2 years, and then easily be processed for DNA isolation by the addition of Proteinase K and subsequent isolation steps. The BuccalFix buffers are offered in bulk, as well as pre-filled into various tube formats to suit both manual and more automated applications where 1D and 2D bar coding, and auto de-cap options are valuable. Additionally the new MS mini swabs will fit into the smaller tubes where 96 tube racking is crucial.



- ✓ **Stabilises your DNA Long Term**
- ✓ **Maintains DNA Structural Integrity**
- ✓ **Improves DNA Yields and Purity**
- ✓ **Room Temperature Storage**
- ✓ **Choice of Collection Tubes – Manual/HT**
- ✓ **Accommodates various swabs designs**
- ✓ **Compatible with most DNA Isolation Kits**

Liste des produits

Référence	Désignation
DNA Buccal swabs	
SK-1S	100 x 1 swab with 5ml tube and cap, individually wrapped and ethylene oxide treated.
SK-2S	100 x 1 swab with 2ml tube and special release cap, individually wrapped and ethylene oxide treated.
SK-3S	250 x 1 swab individually wrapped and ethylene oxide treated.
SK-4S	500 swabs, 250 x 2 swabs per wrapper, ethylene oxide treated and packed 250 units to a box.
SK-5S	600 swabs, 200 x 3 swabs per wrapper, ethylene oxide treated and packed 200 units to a box.
MS-01	Mini Swabs - 100 x 1 swab with 5ml tube, individually wrapped and ethylene oxide treated.
MS-02	Mini Swabs - 250 x 1 swab individually wrapped and ethylene oxide treated.
MS-03	Mini Swabs - 250 x 2 swabs per wrapper, ethylene oxide treated.
MS-04	Mini Swabs - 200 x 3 swabs per wrapper, ethylene oxide treated.
Buccal Swab Stabilisation	
SGC-50	50 x Isohelix Dri-Capsules for long term DNA stability on SK1 swabs. Individually foil wrapped.
BFX/S1/05/50	50 x BuccalFix tubes using Sarstedt 2ml screw cap tubes pre-filled with 0.5ml BuccalFix stabilisation buffer
BFX/F3/05/50	50 x BuccalFix tubes using FluidX 2ml bulk packed bar-coded tubes, pre-filled with 0.5ml BuccalFix stabilisation buffer
BFX-25	BuccalFix stabilisation buffer bulk pack. 25ml, sufficient for stabilising 50 buccal swabs.
Produits Complémentaires	
DNA Isolation and Handling Kits	
BFP-50	BuccalFix Plus DNA Isolation kit for isolating purified DNA from buccal swabs stabilised in BuccalFix tubes. 50 reactions.
BPP-50	Buccal-Prep Plus DNA Isolation Kit - full precipitation based kit for isolating purified DNA from buccal swabs. 50 reactions.
Accessories	
TP-50	50 Transport Packs with absorbent pads for shipping buccal swab samples
BC/3A/50	50 x 3 triplicate Pre-Printed barcodes 25mm x 10mm printed on cryogenic labels
PK/22	22mg Lyophilised Proteinase K - fully tested with instructions
PK/11	11mg Lyophilised Proteinase K - fully tested with instructions
Sample size kits	
SK-3S-T	25 x Swab individually wrapped, no tube, gamma treated (Trial Size)
SGC-3	3 x Isohelix Dri-Capsules for long term DNA stability on SK1 swabs, individually foil wrapped.
BFX/S1/05/3	3 x BuccalFix tubes using Sarstedt 2ml screw cap tubes pre-filled with 0.5ml BuccalFix stabilisation buffer
BFP-3	BuccalFix DNA Isolation kit for isolating purified DNA from buccal swabs stabilised in BuccalFix tubes. For 3 reactions.
BPP-3	Buccal-Prep DNA Isolation Kit - full precipitation based kit for isolating purified DNA from buccal swabs. For 3 reactions.

Isohelix DNA Swab Pack is CE-IVD marked in European market

Nous contacter



Service technique

Réactifs : 01 34 60 60 24 - tech@ozyme.fr

Instrumentation : 01 30 85 92 88 - instrum@ozyme.fr