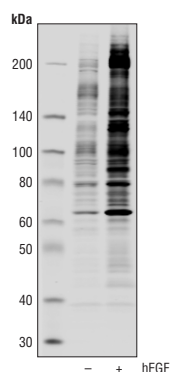


# Motif and PTM Antibodies

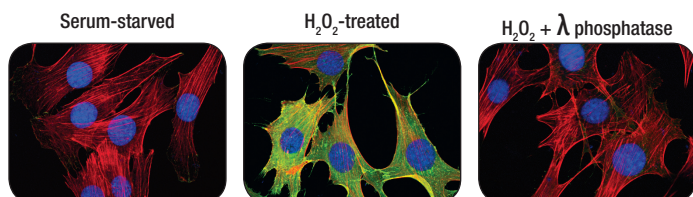
FROM CELL SIGNALING TECHNOLOGY

## Motif and PTM-specific antibodies:

- recognize phosphorylated residues within characteristic sequence motifs (motif antibody), or other PTMs in a context-independent manner (PTM antibody).
- are rigorously validated for specificity and sensitivity using methods such as western blotting, peptide arrays, and peptide IP followed by LC-MS/MS (PTMSan® technology).
- can be used for multi-pathway analysis, proteomic analysis, and in situations where no target-specific antibody is available.



Western blot analysis of extracts from A-431 cells, untreated (-) or treated with Human Epidermal Growth Factor (hEGF) #8916 (100 ng/ml, 5 min; +), using Phospho-Tyrosine (P-Tyr-1000) MultiMab™ Rabbit mAb mix. Western blot image was obtained using the Odyssey® Infrared Imaging System (LI-COR® Biotechnology).



Confocal immunofluorescent analysis of C2C12 cells, serum-starved (left), treated with  $H_2O_2$  (2 mM, 10 min; middle), or treated with  $H_2O_2$  followed by  $\lambda$  phosphatase (right), using Phospho-Tyrosine (P-Tyr-1000) MultiMab™ Rabbit mAb mix (green). Actin filaments were labeled with DyLight™ 554 Phalloidin #13054 (red). Blue pseudocolor = DRAQ5® #4084 (fluorescent DNA dye).

## MultiMab™ Antibody Mixes – Broader coverage

MultiMab™ rabbit monoclonal antibody mixes combine individual rabbit monoclonal clones in optimized ratios for broadest possible coverage of the motif/PTM of interest. They are used in PTMSan® Services and Kits and are available off the shelf for other applications.

## Product Listing

Ser/Thr Phosphorylation			VALIDATED APPLICATIONS*
#9601	Phospho-(Ser) 14-3-3 Binding Motif Antibody		WB, IP, IHC-P, E-P
#9606	Phospho-(Ser) 14-3-3 Binding Motif (4E2) Mouse mAb		WB, IP, E-P
#9614	Phospho-Akt Substrate (RXXS*/T*) (110B7E) Rabbit mAb		WB, IP, IHC-P, E-P
#6950	Phospho-Akt Substrate (RXXS*/T*) (110B7E) Rabbit mAb (HRP Conjugate)		WB
#8050	Phospho-Akt Substrate (RXXS*/T*) (110B7E) Rabbit mAb (Magnetic Bead Conjugate)		IP
#9646	Phospho-Akt Substrate (RXXS*/T*) (110B7E) Rabbit mAb (Sephacore® Bead Conjugate)		IP
#10001	Phospho-Akt Substrate (RXRXXS*/T*) (23C8D2) Rabbit mAb		WB, E-P
#9611	Phospho-(Ser/Thr) Akt Substrate Antibody		WB, IP, IHC-P, E-P
#2981	Phospho-(Ser) Arg-X-Tyr/Phe-X-pSer Motif Antibody		WB, IP, E-P
#5759	Phospho-AMPK Substrate Motif [LXRXX(pS/pT)] MultiMab™ Rabbit mAb mix		WB, IP, E-P
#6966	Phospho-ATM/ATR Substrate Motif [(pS/pT) QG] MultiMab™ Rabbit mAb mix		WB, IP
#9607	Phospho-ATM/ATR Substrate (S*Q) (D23H2/D69H5) MultiMab™ Rabbit mAb mix		WB, IP
#2909	Phospho-(Ser/Thr) ATM/ATR Substrate (4F7) Rabbit mAb		WB
#2851	Phospho-(Ser/Thr) ATM/ATR Substrate Antibody		WB, IP, IHC-P, E-P
#9477	Phospho-CDK Substrate Motif [(K/H)pSP] MultiMab™ Rabbit mAb mix		WB, IP, E-P
#14371	Phospho-CDK Substrate [pTPXK] (D9V5N) Rabbit mAb		WB, IP
#8738	Phospho-CK2 Substrate [(pS/pT)DXE] MultiMab™ Rabbit mAb mix		WB
#2325	Phospho-MAPK/CDK Substrates (PXS*P or S*PXR/K) (34B2) Rabbit mAb		WB, IP, IHC-P, E-P
#5501	Phospho-MAPK/CDK Substrates (PXS*P or S*PXR/K) (34B2) Rabbit mAb (Sephacore® Bead Conjugate)		IP
#14378	Phospho-MAPK Substrates Motif [PXpTP] MultiMab™ Rabbit mAb mix		WB
#9634	Phospho-(Ser/Thr) PDK1 Docking Motif (18A2) Mouse mAb		WB, IP, E-P
#9621	Phospho-(Ser/Thr) PKA Substrate Antibody		WB, IP, IHC-P, E-P
#9624	Phospho-PKA Substrate (RXXS*/T*) (100G7E) Rabbit mAb		WB, IP, E-P
#6967	Phospho-PKC Substrate Motif [(R/K)XpSX(R/K)] MultiMab™ Rabbit mAb mix		WB, IP, E-P
#2261	Phospho-(Ser) PKC Substrate Antibody		WB, IP, E-P
#4381	Phospho-(Ser/Thr) PKD Substrate Antibody		WB, E-P
#5243	Phospho-PLK Binding Motif (ST*P) (D73F6) Rabbit mAb		WB, IP, E-P
#14390	Phospho-Ser-Pro-Pro Motif [pSPP] Rabbit mAb		WB
#8142	Phospho-Thr-Pro-Arg Motif [pTPR] MultiMab™ Rabbit mAb mix		WB
#5757	Phospho-Thr-Pro-Pro Motif [pTPP] (D61C3) Rabbit mAb		WB

MultiMab™ rabbit monoclonal antibody mix.

For additional information on our PTM and motif antibodies visit: [www.cellsignal.com/motif](http://www.cellsignal.com/motif)

[www.cellsignal.com/motif](http://www.cellsignal.com/motif)

For Research Use Only. Not For Use In Diagnostic Procedures.

© 2015 Cell Signaling Technology, Inc. Cell Signaling Technology, PTMSan, MultiMab, and XP are trademarks of Cell Signaling Technology, Inc. All other trademarks are properties of their respective owners. U.S. Patent No. 5,675,063.



Cell Signaling  
TECHNOLOGY®

## Sampler Kits

VALIDATED  
APPLICATIONS\*

#9920	Phospho-(Ser/Thr) Kinase Substrate Antibody Sampler Kit
#9615	Phospho-(Ser) Kinase Substrate Antibody Sampler Kit

## Tyr Phosphorylation

#9411	Phospho-Tyrosine Mouse mAb (P-Tyr-100)	WB, IP, IHC-P, IF-P, IF-F, IF-IC, F, E-P
#9414	Phospho-Tyrosine Mouse mAb (P-Tyr-100) (Alexa Fluor® 488 Conjugate)	F
#9415	Phospho-Tyrosine Mouse mAb (P-Tyr-100) (Alexa Fluor® 647 Conjugate)	IF-IC, F
#9417	Phospho-Tyrosine Mouse mAb (P-Tyr-100) (Biotinylated)	WB, IP, IHC-P
#5465	Phospho-Tyrosine Mouse mAb (P-Tyr-100) (HRP Conjugate)	WB, E-P
#8095	Phospho-Tyrosine Mouse mAb (P-Tyr-100) (Magnetic Bead Conjugate)	IP
#14967	Phospho-Tyrosine Mouse mAb (P-Tyr-100) (PE Conjugate)	F
#9419	Phospho-Tyrosine Mouse mAb (P-Tyr-100) (Sephacrose® Bead Conjugate)	IP
#9416	Phospho-Tyrosine Mouse mAb (P-Tyr-102)	WB, IP, F, E-P
#8954	Phospho-Tyrosine (P-Tyr-1000) MultiMab™ Rabbit mAb mix	WB, IP, IF-IC, F
#14219	Phospho-Tyrosine (P-Tyr-1000) MultiMab™ Rabbit mAb mix (Biotinylated)	WB
#12695	Phospho-Tyrosine (P-Tyr-1000) MultiMab™ Rabbit mAb mix (HRP Conjugate)	WB
#14017	Phospho-Tyrosine (P-Tyr-1000) MultiMab™ Rabbit mAb mix (Magnetic Bead Conjugate)	IP
#14005	Phospho-Tyrosine (P-Tyr-1000) MultiMab™ Rabbit mAb mix (Sephacrose® Bead Conjugate)	IP

## Acetylation

#9814	Acetylated-Lysine (Ac-K-100) MultiMab™ Rabbit mAb mix	WB, IP, ChIP, E-P
#6952	Acetylated-Lysine (Ac-K-100) MultiMab™ Rabbit mAb mix (HRP Conjugate)	WB
#9441	Acetylated-Lysine Antibody	WB, IP, IHC-P, IF-IC, ChIP, E-P
#9681	Acetylated-Lysine Mouse mAb (Ac-K-103)	WB, E-P

## Malonylation

#14942	Malonyl-Lysine [Mal-K] MultiMab™ Rabbit mAb mix	WB
--------	---	----

## Methylation

#8015	Mono-Methyl-Arginine [mme-R] MultiMab™ Rabbit mAb mix	WB, IP
#14117	Di-Methyl Lysine Motif [dme-K] MultiMab™ Rabbit mAb mix	WB, IP
#14680	Tri-Methyl Lysine Motif [tme-K] (D1L1X) Rabbit mAb	WB
#13522	Asymmetric Di-Methyl Arginine Motif [adme-R] MultiMab™ Rabbit mAb mix	WB
#13222	Symmetric Di-Methyl Arginine Motif [sdme-RG] MultiMab™ Rabbit mAb mix	WB

## Nitrosylation

#9691	Nitro-Tyrosine Antibody	WB
-------	-------------------------	----

## Proteolytic Cleavage

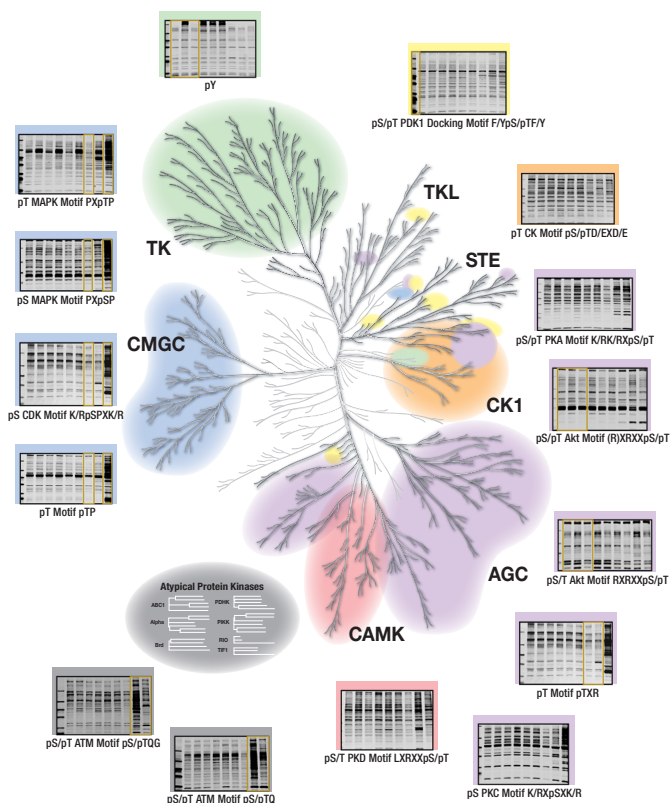
#8698	Cleaved Caspase Substrate Motif [DE(T/S/A/D)] MultiMab™ Rabbit mAb mix	W
-------	--	---

## KinomeView® Profiling

The following phospho-motif and PTM antibodies are included in the **KinomeView® Profiling Kit #9812** for a kinome-wide view of phosphorylation:

#9614	Phospho-Akt Substrate (RXXS*/T*) (110B7E) Rabbit mAb
#10001	Phospho-Akt Substrate (RXRXXS*/T*) (23C8D2) Rabbit mAb
#5759	Phospho-AMPK Substrate Motif [LXRX(pS/pT)] MultiMab™ Rabbit mAb mix
#9607	Phospho-ATM/ATR Substrate (S*Q) (D23H2/D69H5) MultiMab™ Rabbit mAb mix
#6966	Phospho-ATM/ATR Substrate Motif [(pS/pT)QG] MultiMab™ Rabbit mAb mix
#9477	Phospho-CDK Substrate Motif [(K/H)pSP] MultiMab™ Rabbit mAb mix
#8738	Phospho-CK2 Substrate [(pS/pT)DXE] MultiMab™ Rabbit mAb mix
#2325	Phospho-MAPK/CDK Substrates (PXS*P or S*PXR/K) (34B2) Rabbit mAb
#9634	Phospho-(Ser/Thr) PDK1 Docking Motif (18A2) Mouse mAb
#9624	Phospho-PKA Substrate (RRXS*/T*) (100G7E) Rabbit mAb
#6967	Phospho-PKC Substrate Motif [(R/K)XpSX(R/K)] MultiMab™ Rabbit mAb mix
#5243	Phospho-PLK Binding Motif (ST*P) (D73F6) Rabbit mAb
#3003	Phospho-Thr-Pro Motif Antibody
#3004	Phospho-Thr-Pro-Glu (C32G12) Rabbit mAb
#2351	Phospho-Threonine-X-Arginine Antibody
#8954	Phospho-Tyrosine (P-Tyr-1000) MultiMab™ Rabbit mAb mix

MultiMab™ rabbit monoclonal antibody mix.



\*APPLICATIONS WB: Western Blotting • IP: Immunoprecipitation • IHC: Immunohistochemistry • ChIP: Chromatin Immunoprecipitation • IF: Immunofluorescence • F: Flow Cytometry • -IC: Immunocytochemistry  
-P: Paraffin • -F: Frozen • E-P: Peptide ELISA

For Research Use Only. Not For Use In Diagnostic Procedures.