

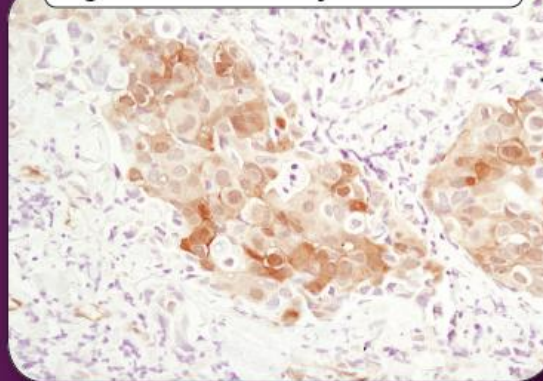
SignalStain[®] Antibody Diluent

Say good bye to mediocre results

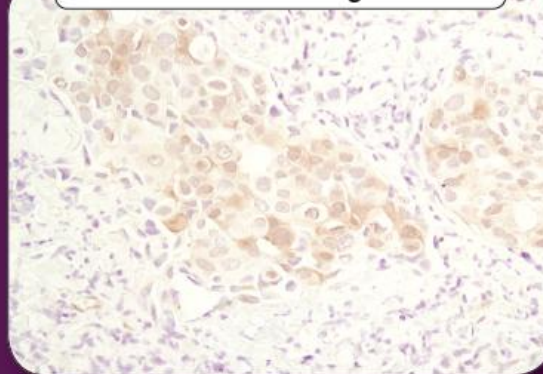
- Superior staining with most CST antibodies*
- Improved signal and lower background

* Please consult the antibody datasheet or [the Antibody Diluent Table](#) to determine if SignalStain[®] Antibody Diluent is recommended for your CST antibody. The Antibody Diluent Table serves to summarize which antibody diluent is currently recommended for our IHC-validated products.

SignalStain[®] Antibody Diluent #8112



TBST with 5% normal goat serum



*IHC analysis of paraffin-embedded human breast carcinoma using phospho-Akt (Ser473) (D9E) XP[™] Rabbit mAb #4060 diluted in **SignalStain[®] Antibody Diluent #8112** or TBST with 5% normal goat serum.*